



National Student Engagement Programme

Clár Rannpháirtíochta Náisiúnta
na Mac Léinn

Building Trust through Student Partnership

HAQEF National Seminar



QQI

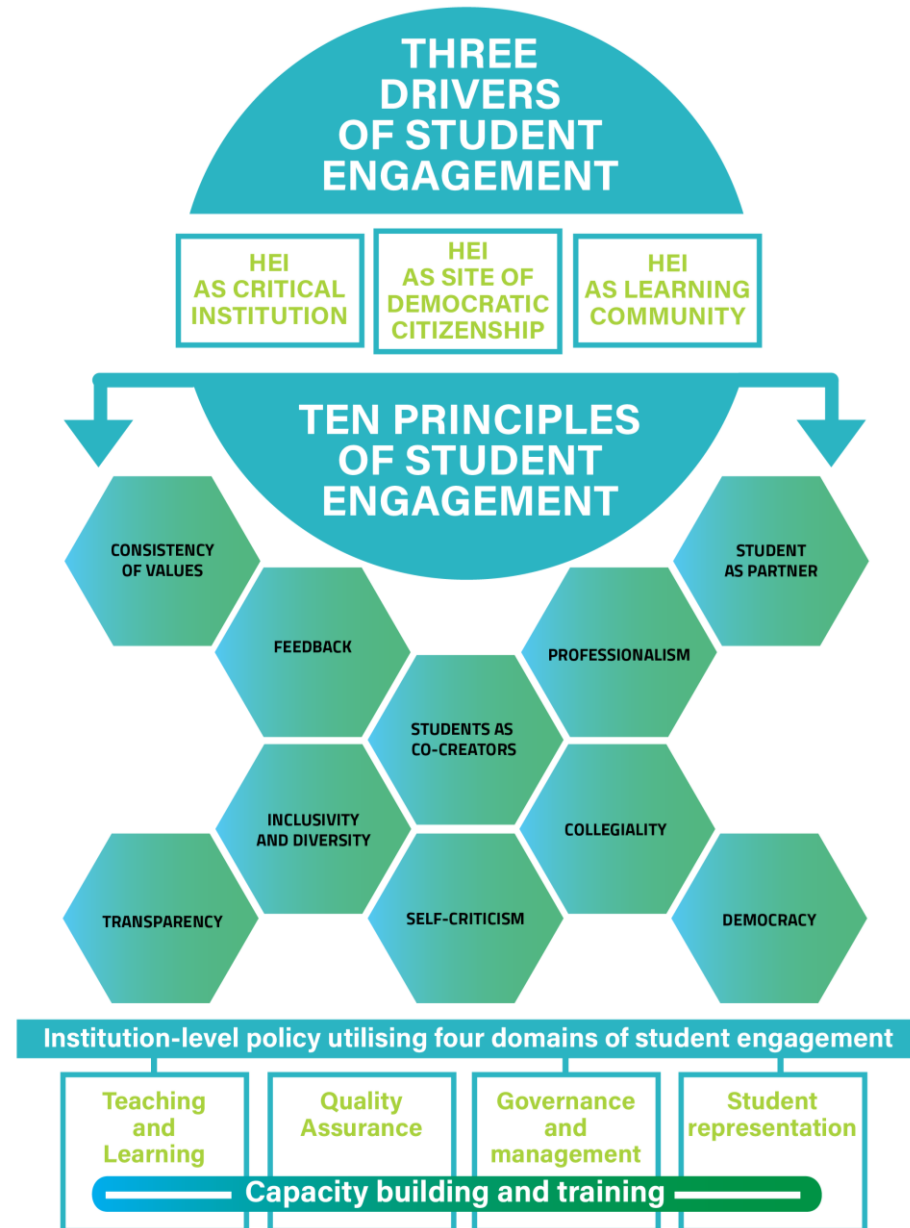
Quality and Qualifications Ireland
Dearbhú Cáilíochta agus Cáilíochtaí Éireann



@NStEPie

How do you currently build relationships of trust, honesty and transparency between yourself and the students you work with?

'Conceptual Framework' for Student Engagement in Irish HE (HEA, 2016)





TRANSPARENCY

FEEDBACK

DEMOCRACY

How does this principle relate to student engagement?

How can this principle be applied to academic integrity?

What are the ways in which both staff and students can support this principle?

How can power relationships be addressed through this principle?

Student Partnership

All partnership is student engagement, but
not all student engagement is partnership.

(Healy, Flint, and Harrington, 2014)



Students are experts in their own learning.

- ▶ Structured dialogue – partnership as prevention
- ▶ A rules based approach *versus* a learning community approach
- ▶ Invite to engage *versus* involvement and participation (roles and responsibilities)
- ▶ Improve understanding – demystify, build confidence, and uncover the hidden curriculum or processes
- ▶ Literacy of both staff and students
- ▶ Develop agency – whole class cohort and individual student



Student Learning Experience

Develop literacy and capacity to navigate the learning environment and the institution itself.



QUESTIONS?

*Follow us /
get in touch*



 nstep@usi.ie

 [@NStEP.ie](https://twitter.com/NStEP.ie)

www.studentengagement.ie

1
Strengthening
the value of
student engagement
nationally

National Student
Engagement Program
Clár Rannpháirtíochta Náisiúna
na Mac Léinn

Support
and student
sector to
culture of p